

St. Paul's Pilgrimage to Washington, DC

August 11 – 14, 2016

MISSION TRIP

MISSION

To help young adults and adults connect their faith with social awareness and action. Through a package based on service, interactive programs and reflection, we seek to educate and empower young people and adults toward lives that serve for a more equitable and just world.

THE PILGRIMAGE
Washington, D.C.

VISION

To build communities where people are freed from chronic hunger, homelessness, and poverty with a deep understanding of the myths, stereotypes, and systemic structures that create these inequalities.

FAITH

A core component spanning prophetic change. Faith has not only been a source of motivation, solace, and unity in the work for justice and equality. Our effort to justice and extend our faith service is a continuation of traditions where faith comes about through action in the public square.

ACTION

At the core of their programs is the belief that transformative experiences happen with service and action. Through direct relationship it proves best organizations working with the poor and homeless. Pilgrimage groups engage in real service to the D.C. community. Through their service groups receive as much as they give, witnessing the reality of what it means to be hungry and poor in the nation's capital.

The Pilgrimage is a service, learning hostel based in the heart of the Nation's capital. With a 60 bed capacity, we host groups who come to Washington, D.C., seeking to engage in service learning and provide education based programs.


The Pilgrimage recognizes that the world is not as it should be, it is broken by hunger, homelessness, poverty, and the inequalities that arise from and because of these issues. A direct result of failing systems and broken relationships, this world can only be changed if we inspire and learn from the following important foundations of change:

By connecting faith formation to social awareness and action, we are creating people who are prepared to make immediate change as well as young people who will carry a life-long commitment to social justice.

During a stay, a Pilgrimage group will participate in service learning through organizations serving the working poor, homeless, and hungry in Washington, D.C. Also essential to a Pilgrimage stay is integrating these experiences through workshops, bible studies, and debriefings that use experiential methods in the hopes of getting justice "under our skin." The action-reflection model of learning is deeply rooted in the "way" of The Pilgrimage and at the core of any Pilgrimage group's experience.

REFLECTION

The Pilgrimage provides a uniquely reflective environment. We focus on reflection because it provides context which is necessary for growth and recovery. With our deep work of reflection-based experiences, Pilgrimage groups take a step back to think critically and question, and transform their service experiences into something that has their deep desire to journey to a broader social and faith awareness.



Dear Friends,

Planning is well underway for the St. Paul's Mission Trip to The Pilgrimage, Washington, DC, August 11-14, 2016.

The Pilgrimage has made room and welcomed groups committed to exploring the connection between faith and urban poverty since 1973. Each year they welcome over 1,500 companions to the streets of Washington, DC to learn the stories and names of the homeless and poor and work to help young people and adults connect their faith and belief systems with social awareness and action."

We understand many of you would like, but are unable to join us. There are, however, many ways for you to participate in this Pilgrimage and make this journey with us.

Those of us traveling to Washington are ready and willing to give of our time and talent and could use your gifts of treasure to help "lighten the load" of our mission. The following sponsorship opportunities are available to members of the St. Paul's family to ensure that this effort is successful. There is no contribution too big or too small for our journey, all donations are greatly appreciated.

- Chariot Chums** - helping to offset the cost of the rental of two vans
- Fuel Friends** - gasoline gift cards to fuel the vans
- Produce Pals** - funds to provide our food while in Washington
- Hydration Helpers** - donations of cases of water and Gatorade
- Color Companions** - funds for St. Paul's T-shirts so we are easily identified

Please contact Cheryl Means, Outreach Committee Chair, to arrange for your donation. cherylmeans@stpauls.org or 919-387-4170.

COMMITMENTS OF
ST. PAUL'S CHURCH & LUTHERAN ADAMS

Day 1

We gather at St. Paul's





















The Pilgrimage

Washington, DC



**The
Pilgrimage**
A service learning center in the heart of Washington, DC
202-387-6615 www.thepilgrimage.org

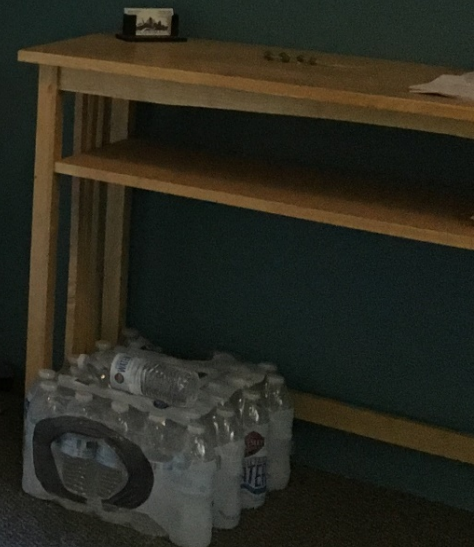
call to your
Conscience
SaveBarfak.org

WELCOME!

	Population	Homeless Population	Median Household Income	People living in Poverty
USA	323 million	578,424	\$53,657	46.7 million - 14.4%
Washington, DC	601,723	11,623	\$49,000	110,667 - 18%
Virginia	8,330,000	7,020	\$62,000	953,395 - 11.4%
New York	19,750,000	80,590	\$71,155	3,062,938 - 15.5%
Pennsylvania	12,790,000	15,333	\$52,005	1,682,212 - 13.2%



FAITH ACTION REFLECTION





Day Two

*National Coalition for the Homeless
&
Martha's Market*

*National Coalition for the
Homeless*



















Martha's Market





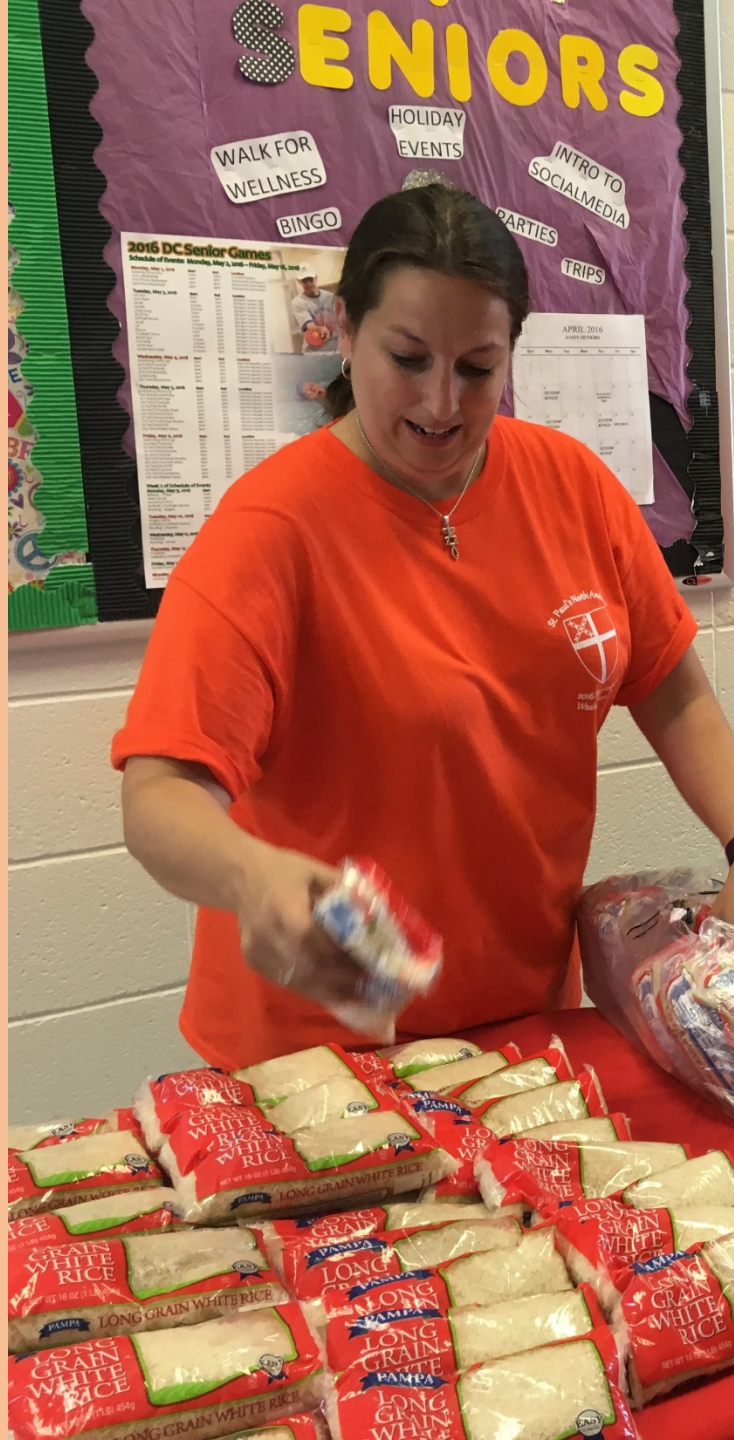


















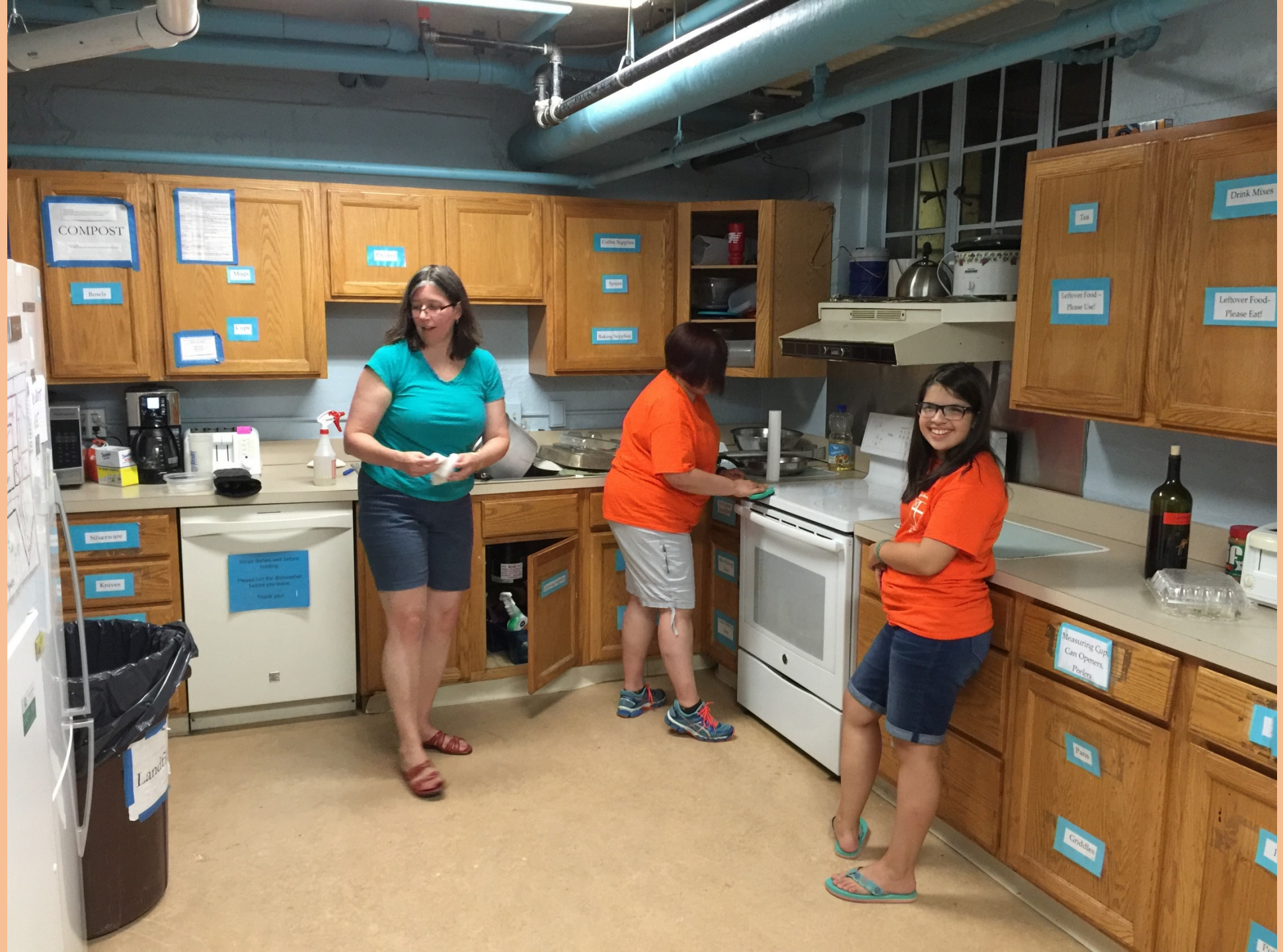


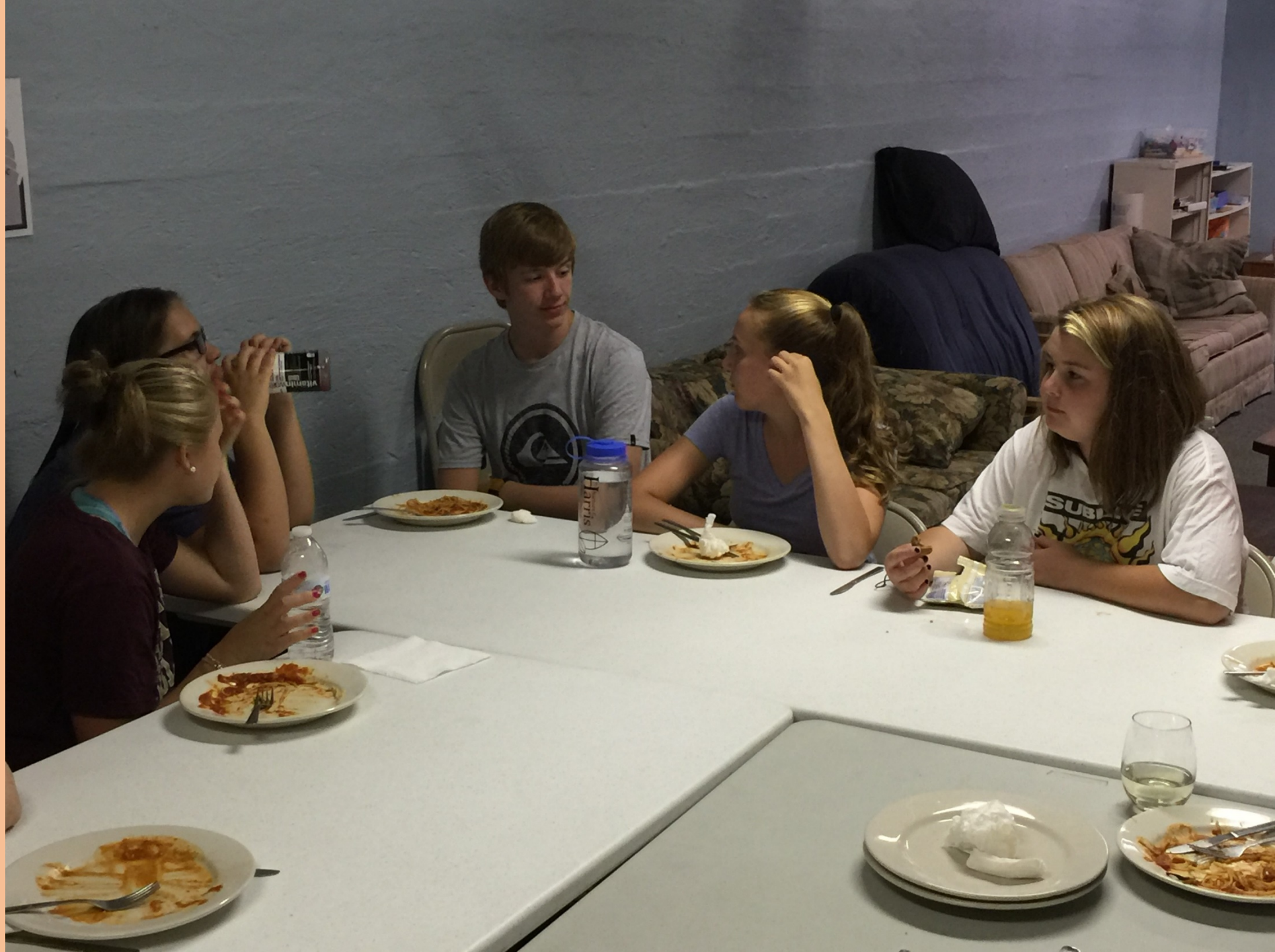






Dinner, Reflection and Fun













Day Three

*Charlie's Place
&
Loaves and Fishes*

Charlie's Place











Loaves and Fishes



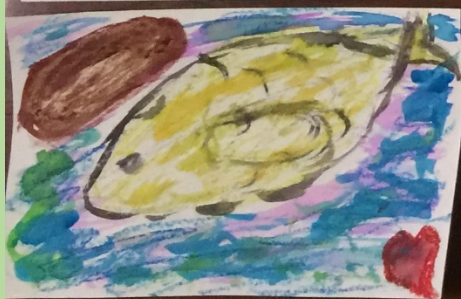
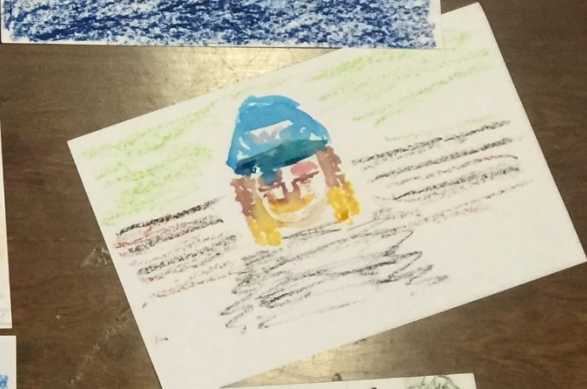
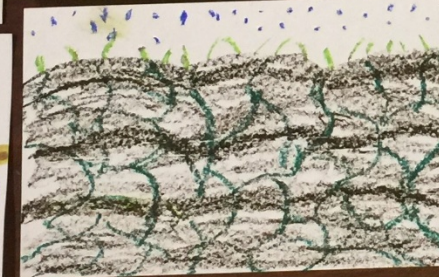








*Final Reflection
then
Relaxation*







Day Four

The National Cathedral





Thank you all for your love, support and prayers.

Members of the St. Paul's Washington, DC Pilgrimage

The Rev. Sarah Kelb

Cheryl Means

Dave Means

Leslie Kalafarski

Peter Kalafarski

Christine McNally

Will McNally

Haley McNally

Alex McNally

Michele Hardcastle

Aerin Hardcastle

Logan Hardcastle

Sarah Hardcastle

Linda Swartz

Dana Swartz

Dawn Fraser

Carly Fraser